

KVM can be so *simple*
Let's connect!
 kvm-tec

4k ultra line



www.kvm-tec.com

It's not only a solution - it's a revolution. 4K Display Port 1.2 Extender over IP in Fiber with a range of 300m/984ft (opt 120km/74mi) with a resolution of 4096x2160 @ 60Hz and perfect color coding at 4:4:4 @8 bit per color. The perfect tuning of kvm-tec video compression with a low latency allows a delay-free transmission of the signals. USB and video is transmitted with one cable. 4K videos are transmitted in real time. The CPU (local) and the CON (remote) part have two local video outputs, splitter function with 4 K or multi-stream support at a resolution up to 2560 x 1600/60Hz. The built-in MST hub/splitter allows the transmission of two different image contents via one cable up to a maximum resolution of 2560x1600/60Hz.

With the included switching upgrade up to 2000 endpoints, the 4K ULTRALINE DP 1.2 Extender can be integrated into a matrix switching system in conjunction with a standard 10G network switch. Switching can be done either via the OSD menu with key combination or directly via the Switching Manager. The intelligent software kvm-tec Switching Manager enables convenient management and intuitive operation of KVM extenders in the switching system. A Windows PC or Tablet with network interface is required for commissioning and operating the software.

kvm-tec = C⁴



4K Displayport Extender over IP
 Max. resolution 4096 X 2160 @ 60 Hz
 Max distance 300m/984ft in Fiber (up to 120km/74mi SFP+ Singlemode module)
 4K Videos in real time
 USB 2.0 - in house development
 only one Duplex Multimode fibercable (LC) for USB and video
 can be use in the Matrix Switching System up to 2000 endpoints
 built in MST -HUB
 Downscaling - 4 K image on a Full HD monitor

.... smart connection

USB save feature
 Automatic Plug & Play installation
 Displayport extension without loss of quality
 Ultra compact up to 2 extenders in 19" 1RU
 Local (CPU) / remote (CON) Monitor output
 Firmware Flash Upgrade without cable
 Transmission rate max 480 Mbit/s
 Sound analog, RS 232, USB memory
 Warranty 2 years, warranty extension to 5 years possible

kvm-tec Softwarefeature

4K Multiview Commander

4 PC contents can be controlled and operated on one 4K screen

Mouse glide & Switch

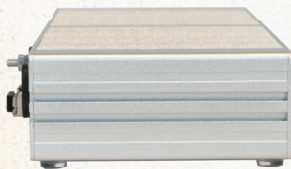
up to 8 monitors can be operated with 1 mouse & 1 keyboard

4K Ultraline Fiber

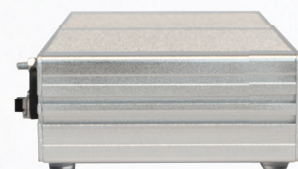
Part No.: 6902

KVM can be so *simple*
Let's connect!
kvm-tec

6902L Local CPU unit



6902R Remote CON unit



CONNECT kvm-tec Extender in Matrix Switching Systems and you can go up to 2000 endpoints and have a super fast switching. You can connect a wide range of different sources (servers, operator workstation, PC, surveillance cameras, video walls and much more) and operate & control the system with centralized management

Network Environment; 1 or 10 Gbit bandwidth
IGMP Snooping (for videosharing)



COLLABORATE with standard network components. kvm-tec Extender are compatible with standard network components and all kvm-tec Extender can collaborate in real time with 60Hz in full HD or 4K resolution



COMMUNICATE in your Switching System with our kvm-tec Switching Manager Software. The local and remote Extender are arranged in an optimized way and the Extender status is highlighted in color. With the kvm-tec Systems computers and servers can be located away from work desk into central server room for a high security level. The environment heat and noise are reduced at the work station and an ergonomic and quiet workplace for all users is possible



CONTROL your application in a much better way with all our in-house developments, like USB 2.0 transmission, video compression without latency, only one cable for USB and video transmission, zero latency. With our unique features each user can access multiple PC sources and can control and operate up to 16 screens with one mouse & keyboard. Video sharing can be done seamless and a central video wall can be integrated for sharing all informations in real time

kvm-tec = C⁴



connect



collaborate



communicate



control

4K Ultraline Fiber

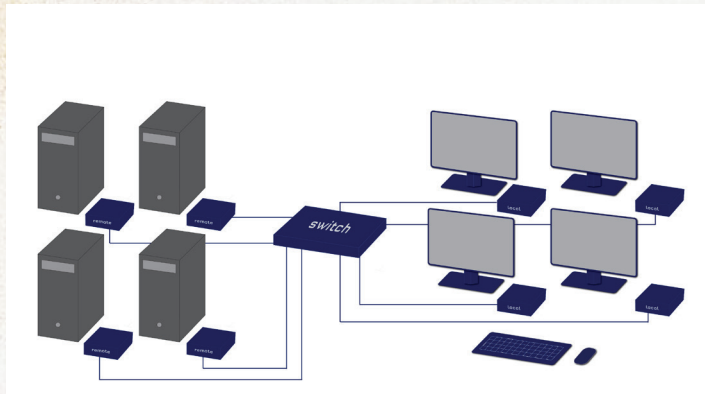
Part No.: 6902

Let's connect!
KVM can be so *simple*
kvm-tec

SOFTWARE - FEATURES ULTRALINE

MOUSE GLIDE & SWITCH

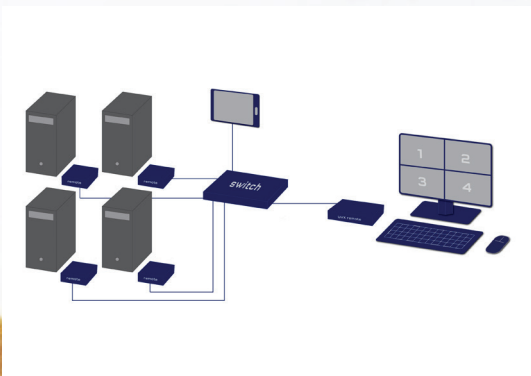
Mouse Glide & Switch - operated via the switching manager and with only one mouse and one keyboard several PCs can be operated from one workstation. The arrangement of up to 8 monitors can be horizontal or vertical and is comparable to a virtual desktop wall and can be operated via the Switching Manager.



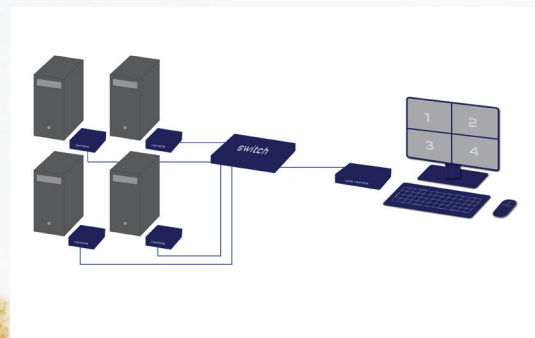
4K MULTIVIEW COMMANDER

The 4K Multiview Commander is an additional feature for the 4K KVM Extender. This feature allows video signals from different PCs to be displayed simultaneously on only one 4K screen. With the kvm-tec innovation, the PCs can also be controlled and operated via the kvm-tec transparent USB 2.0 transfer. This feature is unique worldwide. Thanks to the skillful management of USB transmission, kvm-tec has succeeded in making every screen content individually usable. Depending on the mouse position, the USB signals can be routed to the corresponding PC to make the screen content usable. With the 4K Multiview Commander, up to 4 different PCs can be controlled and operated with one 4K monitor, depending on the resolution. Also with different operating systems. This kvm-tec feature enables ergonomic and space-saving work with 4k applications in control and monitoring rooms. The 4K Multiview Commander is available stand alone or in configuration with the Switching Manager. Operation System independent e.g. Linux/ Windows from remote (CON) up to 120km/74mi, compatible with standard networks, Zoom-function - each part of the screen can therefore be enlarged as a full screen, Red frame - for easier operation, a red frame for orientation is displayed when changing screens

4K Multiview Commander with Switching Manager (Software Switching Manager included)



4K Multiview Commander stand alone



Switching Manager Software

The intelligent software solution from kvm-tec for managing all KVM extenders connected in a matrix switching system up to 2000 endpoints. The local and remote parts can be connected or disconnected by touch or mouse click. For a quick overview, the extenders are arranged in an optimized way and the status of the extenders is highlighted in color.

Easy Login and Logout (ADMIN&USER)

Intuitive control through coloured stored extender status

GRID and TREEVIEW Layout

Flexible renaming of extenders in the system

Icons for control, disconnect and connection and sharing

Extender Binding

Search box Function

stores up to 5 various scenarios

display of the USER sessions

update management for all extenders in the switching system

Extender setting definition

Multihead groups and static partner

Mouse glide&switch

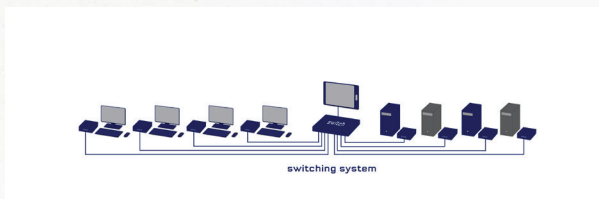
4K Multiview Commander Management

super fast live Preview

Capturing - 4K uncompressed screen shot

displays & Update the current firmware version in the Switching System

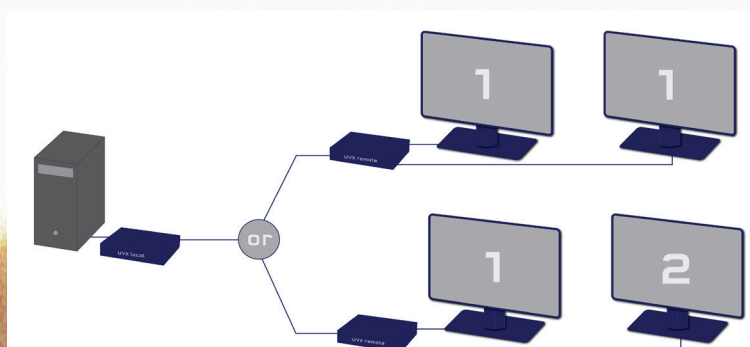
Network Environment 10Gigabit bandwidth: IGMP Snooping



HARDWARE - FEATURE 4K ULTRALINE

BUILT-IN MST HUB

The built-in MST/HUB splitter allows the transmission of two different image contents via one cable up to a max. resolution of 2560 x 1600@60Hz. The CPU (local) and the CON (remote) part has two video outputs with splitter multistream function. With a 4k resolution @60Hz one screen content is transmitted which is available on both outputs at the same time. With a resolution up to 2560 x 1600@60Hz two different picture contents can be transferred to the monitors.

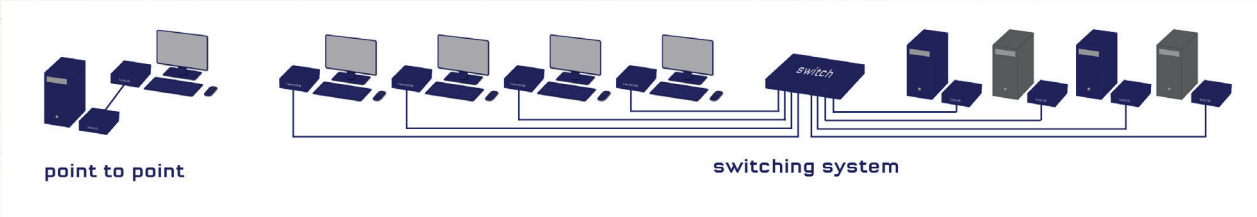


Technical Specifications

		UVX -FLocal/CPU	UVX -FRemote/CON
Interfaces	Video	1 x DP 1.2 in (no HCDP) 2 x DP1.2 out	2 x DP 1.2 out
	USB 2.0	1 x USB-B to PC	4 x USB-A (devices)
	Audio	1 x 3,5mm jack plug (Line In) 1 x 3,5mm jack plug (Line out)	1 x 3,5mm jack plug (Line In) 1 x 3,5mm jack plug (Speaker)
	RS232	1x D-Sub9 socket (female)	1x D-Sub socket (male)
	AUX	1x RJ45 1Gbit	1x RJ45 1Gbit
Video	Signal type Resolution (digital) Colour mode Pixel Coding	DP 1.2 max. 4096 x 2160 @ 60Hz 24bit 4:4:4	DP 1.2 max. 4096 x 2160 @ 60Hz 24bit 4:4:4
Audio Analog	Type Bandwidth	analog 16bit, 44kHz, 2ch	analog 16bit, 44kHz, 2ch
Audio embedded Displayport Digital	Type Bandwidth	digital 16bit, 44kHz, 2ch	digital 16bit, 44kHz, 2ch
USB	Spezification Type Rate	USB 2.0 transparent max. 480 Mbit/s	USB 2.0 transparent max. 480 Mbit/s
RS232	Type Rate Signal	Transparent max. 230.400 bps Tx/D, Rx/D, DTR, CTS,	Transparent max. 230.400 bps Tx/D, Rx/D, DTR, CTS,
Casing	Material Dimension (W x H x D) Weight Shipment weight Set2,40kg/5,92lb	anodized aluminum 218 x 43 x 105 mm/ 8.58 x 1.69 x 4.14inch 676g/ 1.49lb shipment 1,40kg/3,08lb	anodized aluminium 218 x 43 x 105 mm/8.58 x 1.69 x 4.14inch 707g/1lb shipment 1kg/2,2lb
power supply	Type	internal power supply AC 90-240V/60-50Hz IEC plug (IEC-320 C14)	internal power supply AC 90-240V/60-50Hz IEC plug (IEC-320 C14)
Redundant power supply	Type	12 VDC 2A (optional)	12 VDC 2 A (optional)
Power input	Operation	15W	15W without devices
Operation environment	Temperature Humidity	0 to +45 °C (32 to 113 °F) < 80%, non condensing	0 to +45 °C (32 to 113 °F) < 80%, non condensing
Storage environment	Temperatur Humidity	-25 to 80 °C (-13 to 176 °F) < 80%, non condensing	-25 to 80 °C (-13 to 176 °F) < 80%, non condensing
Cooling		free air convection	free air convection
MTBF		82.820 calculated hours ca. 10 years	82.820 calculated hours ca. 10 years
Conformity		CE, FCC	CE, FCC
Warranty		2 years (5 years opt.)	2 Jears (5 Jyears opt.)
Delivery content	Device power supply cable	1x UVX1 -F Local (CPU) 1x power cord EC C13 1x DP - DP cable 1,8m/5,9ft 1x USB A-B cable 1,8m/5,9 ft	1x UVX1 -F Remote (CON) 1x power cord IEC C13
Fiber Class 1 Laser Product to DIN4008/E and VDE 0837	SFP Modules	1 x SFP+ Module-Multimode up to 300m/984ft optional Single mode module up to 10km/6,2mi ItemNr 7017	1 x SFP+ Module-Multimode up to 300m/984ft optional Single mode module up to 10km/6,2mi ItemNr 7017
	Mounting	4 x rubber feet	4 x rubber feet
	Manual	Quickinstallation manual download www.kvm-tec.com/support	

Part Number & short description

Part No	Part No	short description
6902	UVX1-F	Ultraline 4K Extender Single Fiber-Set UPC 051497031763
6902 FL	UVX1-FL	Ultraline 4K Extender Single Fiber –Local Unit (CPU) UPC 51497031688
6902 FR	UVX1-FR	Ultraline 4K Extender Single Fiber –Remote Unit (CON) UPC 051497031671
4003	KVM-SM480	The intelligent software - kvm-tec Switching Manager enables convenient and intuitive management of KVM extenders in the switching system
9003 9002	GV5JU GV5J	Warranty extension to 5 years per UNIT Warranty extension to 5 years per SET
Add on 6230	RMK-F	Rack Mounting Kit with front panel for UVX UPC 051497031725
7017	UVX-SM	optiional LWL Single Mode SFP+Module 10 km /6,2 mi



point to point max. distance 300m/984ft in fiber

Switching System up to 2000 endpoints