

Let's connect!
KVM can be so simple
kvm-tec

matrix line



www.kvm-tec.com

The highly optimized KVM Extender over IP has a range of 150m/492ft at a resolution of 1920x1200 @60 Hz and is available in copper as single version. The perfect tuning of kvm-tec video compression with a low latency time enables a delay-free transmission of the signals. USB and video is transmitted via CAT5e/6/7 cable. Due to the DVI extension Full HD videos can be transmitted in real time.

All upgrades such as USB memory, sound, RS232, analog VGA-as DVI transfer are already included.

With the included switching upgrade up to 2000 endpoints, the MX 2000 Extender can be integrated into a matrix switching system up to 2000 endpoints in conjunction with a standard network switch. kvm-tec Switching Manager - the intelligent software enables convenient management and intuitive operation of KVM extenders in the switching system. A Windows PC or Tablet with network interface is required for commissioning and operating the software.

$kvm-tec = C^4$



DVI-I USB 2.0 KVM Extender
Resolution 1920x1200@60 Hz
Max. distance 150 m/492ft in copper
Full HD videos in real time
**USB 2.0 transparent-
in house development**
**Only one CAT5e/6/7 cable
for USB and video**
**Can be used in the Matrix Switching
System up to 2000 endpoints**

Automatic Plug & Play installation

DVI extension without loss of quality

**Ultra compact up to 4 extenders
in 19" 1RU**

**Local (CPU) / remote (CON)
Monitor output**

Firmware Flash Upgrade without cable

Transmission rate max 480 Mbit/s

screw on DVI connector

**Warranty 2 years, warranty extension
to 5 years possible**

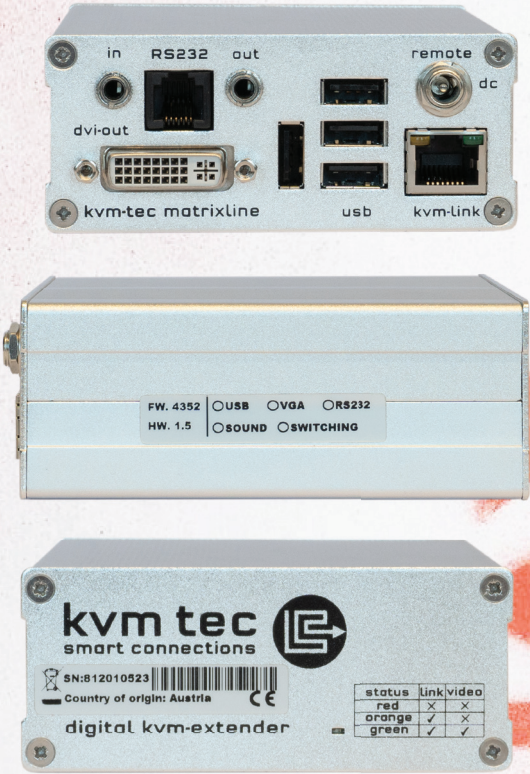
kvm-tec Softwarefeature

Mouse glide & Switch

up to 8 screens can be operated and controlled with 1 mouse & 1 keyboard

6711L Local CPU unit

6711R Remote CON unit



CONNECT kvm-tec Extender in Matrix Switching Systems and you can go up to 2000 endpoints and have a super fast switching. You can connect a wide range of different sources (servers, operator workstation, PC, surveillance cameras, video walls and much more) and operate & control the system with centralized management

Network Environment; 1 or 10 Gbit bandwidth
 IGMP Snooping (for videosharing)



COLLABORATE with standard network components. kvm-tec Extender are compatible with standard network components and all kvm-tec Extender can collaborate in real time with 60Hz in full HD or 4K resolution



COMMUNICATE in your Switching System with our kvm-tec Switching Manager Software. The local and remote Extender are arranged in an optimized way and the Extender status is highlighted in color. With the kvm-tec Systems computers and servers can be located away from work desk into central server room for a high security level. The environment heat and noise are reduced at the work station and an ergonomic and quiet workplace for all users is possible



CONTROL your application in a much better way with all our in-house developments, like USB 2.0 transmission, video compression without latency, only one cable for USB and video transmission, zero latency. With our unique features each user can access multiple PC sources and can control and operate up to 16 screens with one mouse & keyboard. Video sharing can be done seamless and a central video wall can be integrated for sharing all informations in real time

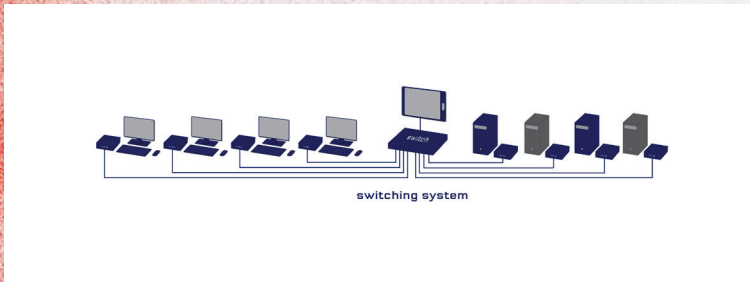
kvm-tec = C⁴

connect collaborate communicate control

Switching Manager Software

The intelligent software solution from kvm-tec for managing all KVM extenders connected in a matrix switching system up to 2000 endpoints. The local and remote parts can be connected or disconnected by touch or mouse click. For a quick overview, the extenders are arranged in an optimized way and the status of the extenders is highlighted in color.

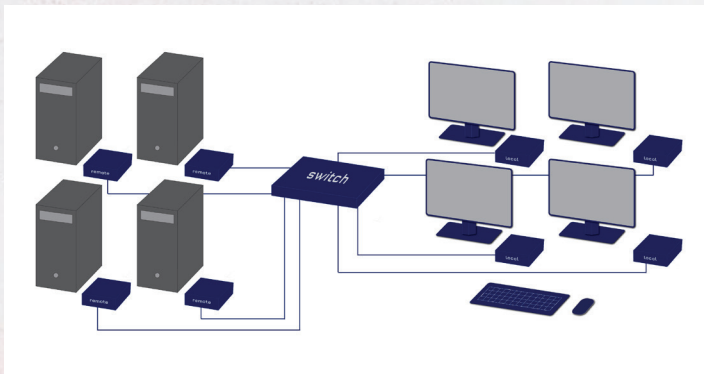
- stores up to 5 various scenarios
- display of the USER sessions
- update management for all extenders in the switching system
- Extender setting definition
- Multihead groups and static partner
- Mouse glide&switch
- 4K Multiview Commander Management
- unlocking kvm-tec upgrades
- displays & Update the current firmware version in the Switching System
- Network environment 1Gigabit Bandwidth: IGMP Snooping



SOFTWARE - FEATURE

Mouse Glide & Switch

with only one mouse and one keyboard, multiple PCs can be operated from one workstation. The arrangement of up to 8 monitors via the Switching Manager can be horizontal or vertical and is comparable to a virtual desktop wall. With the stand alone solution up to 4 screens/PCs can be operated and controlled.



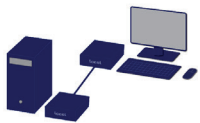
kvm-tec

Technical Specifications

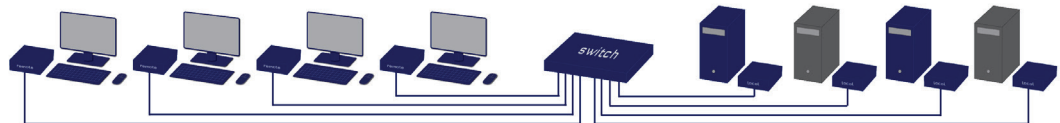
		MX2000 Local/CPU	MX2000 Remote/CON
Interfaces	Video	1 x DVD-D in, DVI-I in (no HDCP) 1 x DVI-I out	1 x DVI-D out
	USB 2.0	1 x USB-B zum PC	4 x USB-A (devices)
	Audio	1 x 3,5mm jack plug (Line In) 1 x 3,5mm jack plug (Line out)	1 x 3,5mm jack plug (Line In) 1 x 3,5mm jack plug (Speaker)
	RS 232	1x RJ11 connector (Adapter RJ11-Sub9)	1x RJ11 connector (Adapter RJ11-Sub9)
Video	Signal type Resolution (digital) Resolution (analog) (opt.) Color mode	DVI-I, DVI-D max. 1920x1200 @ 60Hz 24bit	DVI-D max. 1920x1200 @ 60Hz 24bit
Audio	Type Bandwidth	analog 16bit, 44kHz, 2ch	analog 16bit, 44kHz, 2ch
RS232	Spezification Type Rate	Transparent max230 400 TxD, RxD,DTR,CTS	Transparent max 230 400 TxD, RxD,RTS,CTS
USB	Type Rate Signals	USB 2.0 transparent max. 480 Mbit/s mass storage and camera	USB 2.0 transparent max. 480 Mbit/s mass storage and camera
Casing	Material Dimension (W x H x D) Weight	anodized aluminum 97.5 x 40 x 103.5 mm/3,83 x 1,57 x 4,07 inch 302g 0,55 lb	anodized aluminum 97.5 x 40 x 103.5 mm/3,83 x 1,57 x 4,07 inch 291g/0,64 ib
	shipment weight	1,40kg/3.08 lb	0,60kg/ 1,32 ib
Power Supply	Type	Wall power supply 12 VDC 1A	Wall power supply 12 VDC 1A
Power Input	Operation	6W	6W without USB devices
Operation environment	Temperature Humidity	0 to +45 °C /32 to113 °F) < 80%, non condensing	0 to +45 °C (32 to 113 °F) < 80%, non condensing
Storage enviroment	Temperature Humidity	25 to 80 °C /-13 to 176 °F < 80%, non-condensing	25 to 80 °C /13 to 176 °F < 80%, non- condensing
Cooling		free air convection	free air convection
MTBF		82.820 calculated hours approx.10 years	82.820 calculated hours approx.10 years
Conformity		CE, FCC	CE, FCC
Warranty		2 years (5 years opt.)	2 years (5 years opt.)
Delivery content	Devices	1 x MX2000 local (CPU)	1 x MX2000 remote (CON)
	Power Supply	1 x Wall power supply 12V 1A (EU-plug) or INT plug	1 x Wall power supply 12V 1A (EU-plug) or INT plug
	Cables	1 x DVI - DVI cable 1.8m (5,9ft) 1 x USB A-B cable 1.8m (5,9ft)	
	Mounting	4 x Rubber feet	4 x Rubber feet
	Manual	Quickinstallation manual download www.kvm-tec.com/support	

Part Number & Short description

Part No	Order Nr	short description
6711L 6711R	MX1L2000 MX1R2000	Matrixline Extender Single -Local Unit (CPU) UPC 051497031541 Matrixline Extender Single -Remote Unit (CON) UPC 051497031558
4003	KVM-SM480	The intelligent software - kvm-tec Switching Manager enables convenient and intuitive management of KVM extenders in the switching system.
9003 9002	GV5JU GV5J	Warranty extension to 5 years per UNIT Warranty extension to 5 years per SET
ADD-ONS 6130	RMK-F	Rack Mounting Kit wiith front panel UPC051497031718
6131	RMK-FN	Rack Mounting Kit with front panel and Power supply UPC 051497031732
6132	RMK-FRN	Rack Mounting Kit with and red. Power supply UPC051497031749
6135 6136 6736	UMK TSB VH	Mounting Kit for under the table Din Rail Mounting Kit 6136 Vesa Mounting



point to point



switching system

point to point max. distance 150m/492ft in copper

Switching System up to 2000 endpoints